

Rapid Rail Support System

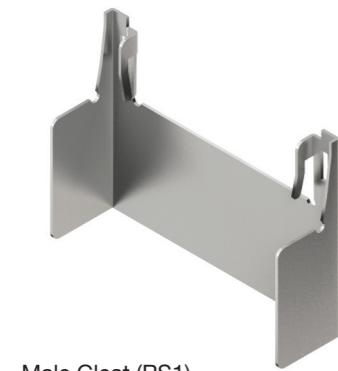
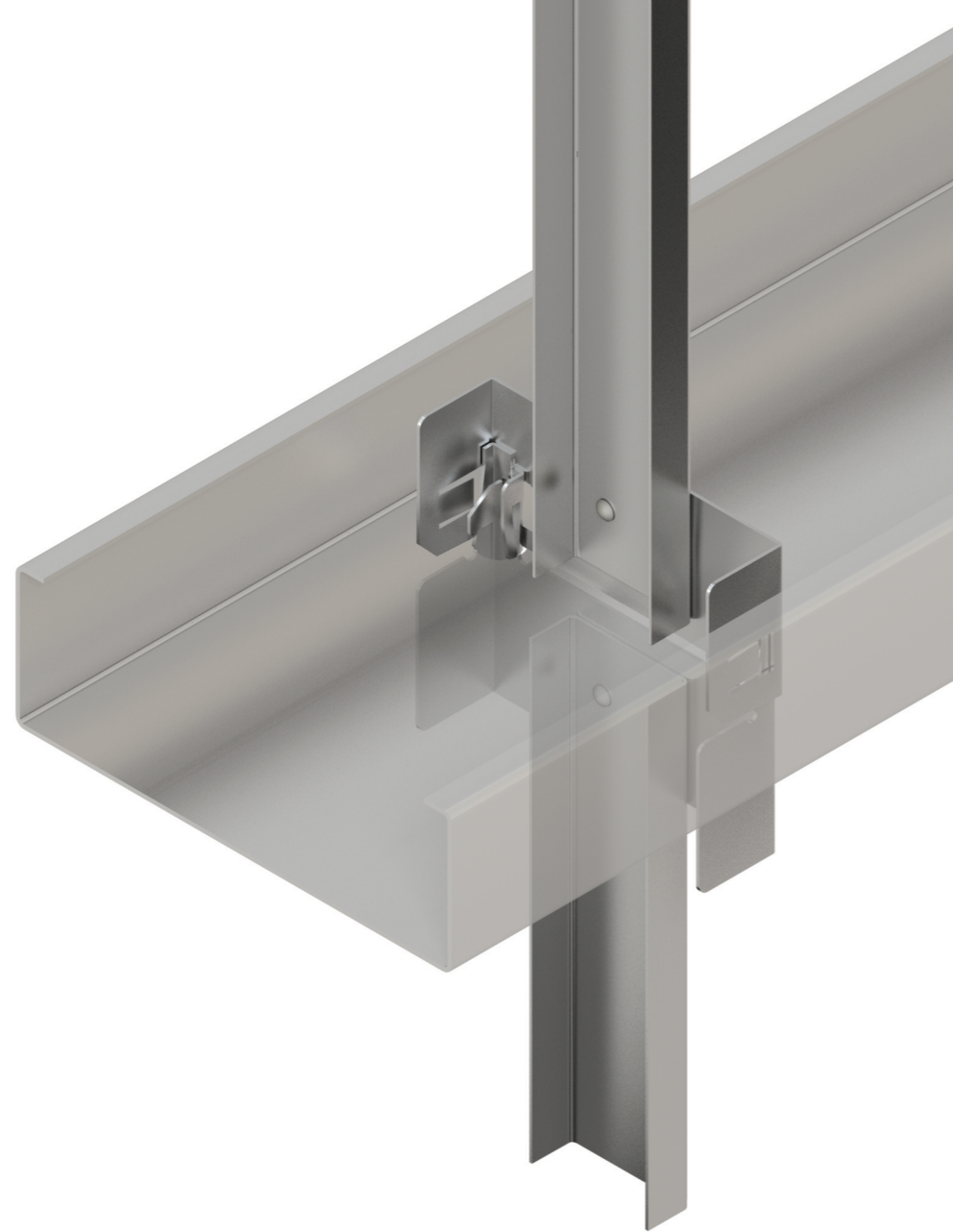
A bolt-free, push-fit rail support system offering up to 80% reduction in installation times.

To be used in conjunction with side rail systems as shown in the main technical manual for both C and Z systems in the following section depths:

142, 172, 202, 232, and 262

Notes

- i. The rapid rail support system can be used for both vertical and horizontal cladding. For vertical cladding refer to page 38 of our technical manual. For horizontal cladding refer to page 48, please note that vertical top hat sections fixed to the side rails by the sheeting contractor will be required.
- ii. A set of diagonal tie wires must be provided to the bottom set of rails.
- iii. The rapid rail support cannot be connected to an eaves beam.



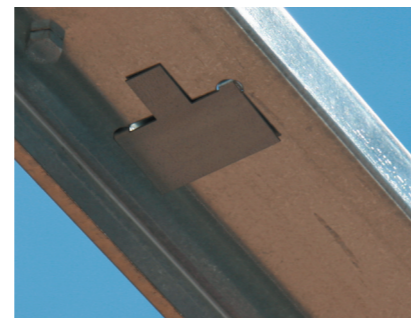
Male Cleat (RS1)



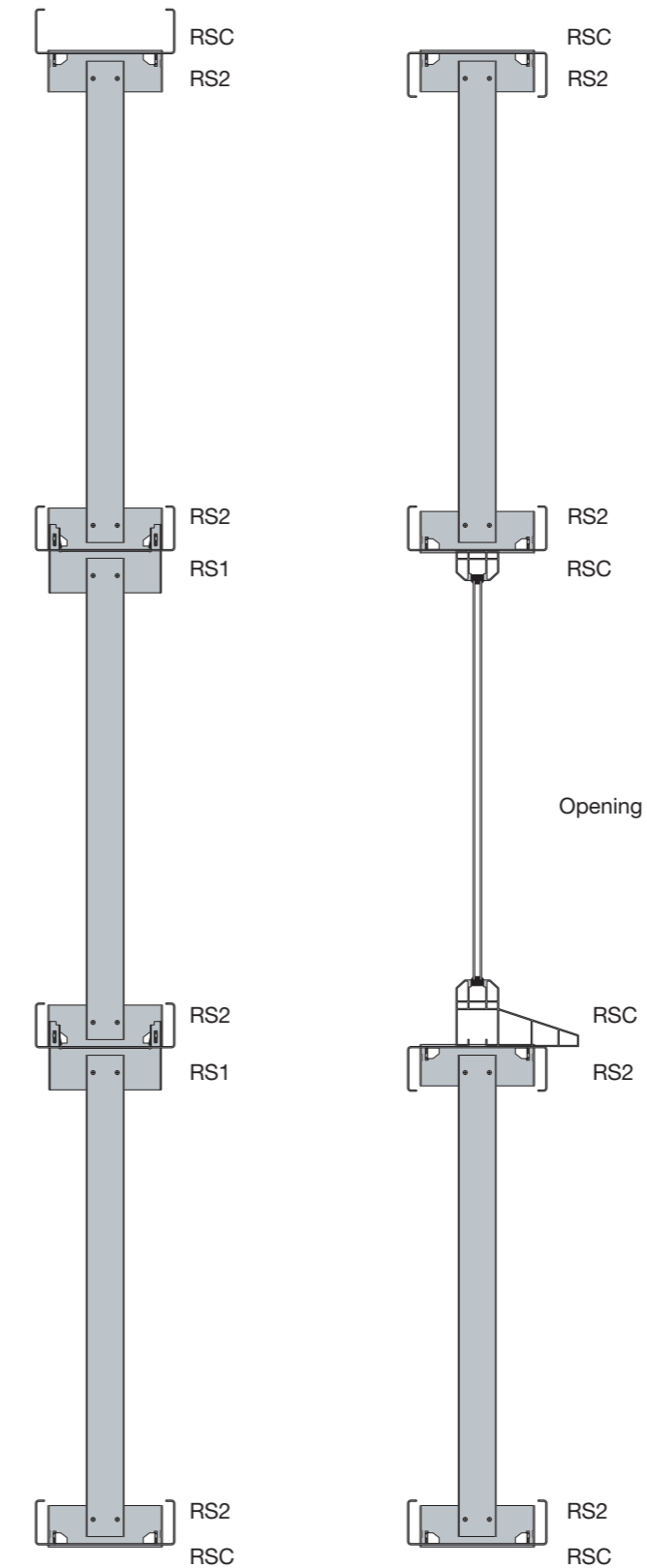
Female Cleat (RS2)



Start/Stop Cleat (RSC)



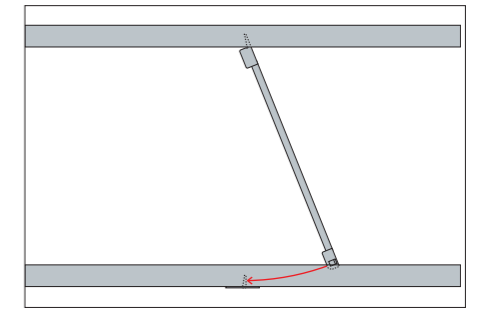
Typical assembly arrangements



Section through side rails without opening

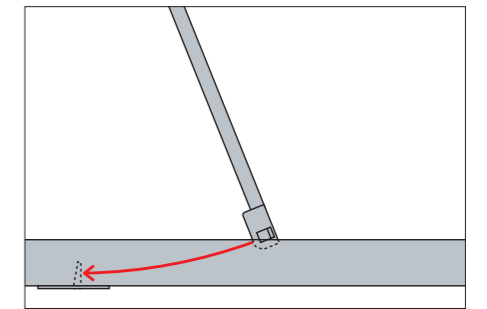
Section through side rails with opening

Installation procedure

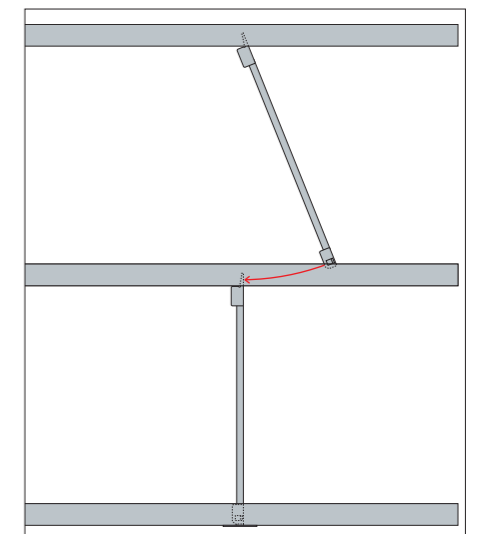


1. Provide temporary props to the bottom rail to ensure a level line is achieved.

The Starter Cleat is then installed in the bottom rail and the male end of the rapid rail support is installed in the upper rail.



2. The rapid rail support is then rotated and clicked into the start/stop cleat.



3. Subsequent rapid rail supports are then installed with the male end inserted in the upper rail and the female end clicked into the lower rapid rail support. The top rail is finished with a start/stop cleat.